



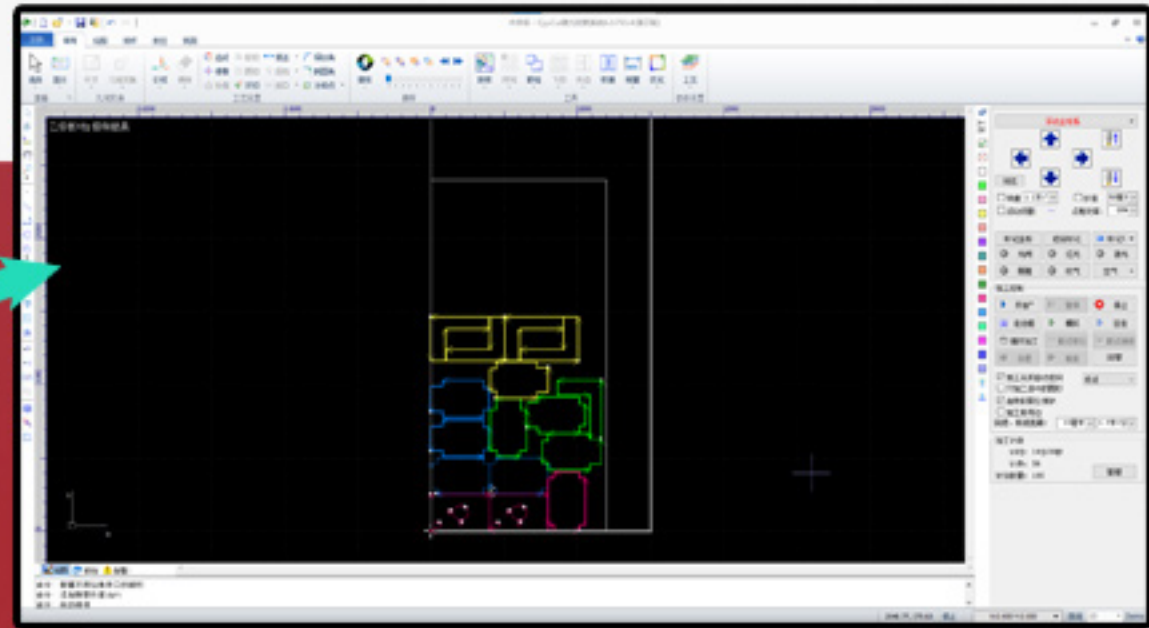
PRECISION Cutting Machine



- ▶ **Outstanding Stability**
- High Efficiency**
- Excellent Precision**

PRODUCT DISPLAY

Shandong Leize Intelligent Technology Co., Ltd.



BAICHU SYSTEM



2000E. Bus system
High stability
High integration



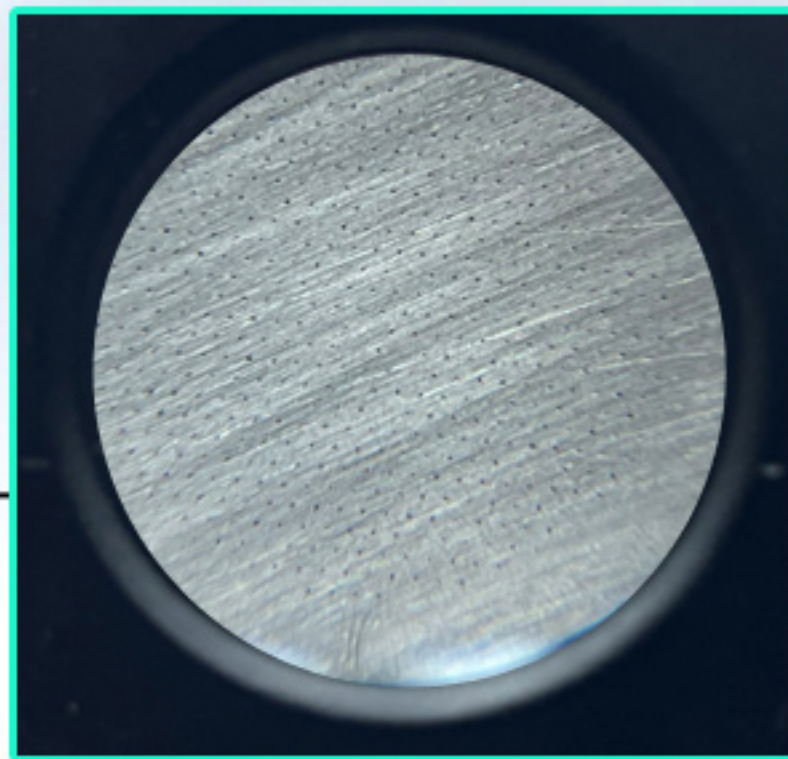
OPERATE REMOTE CONTROL

Remote operation without touching the machine tool.

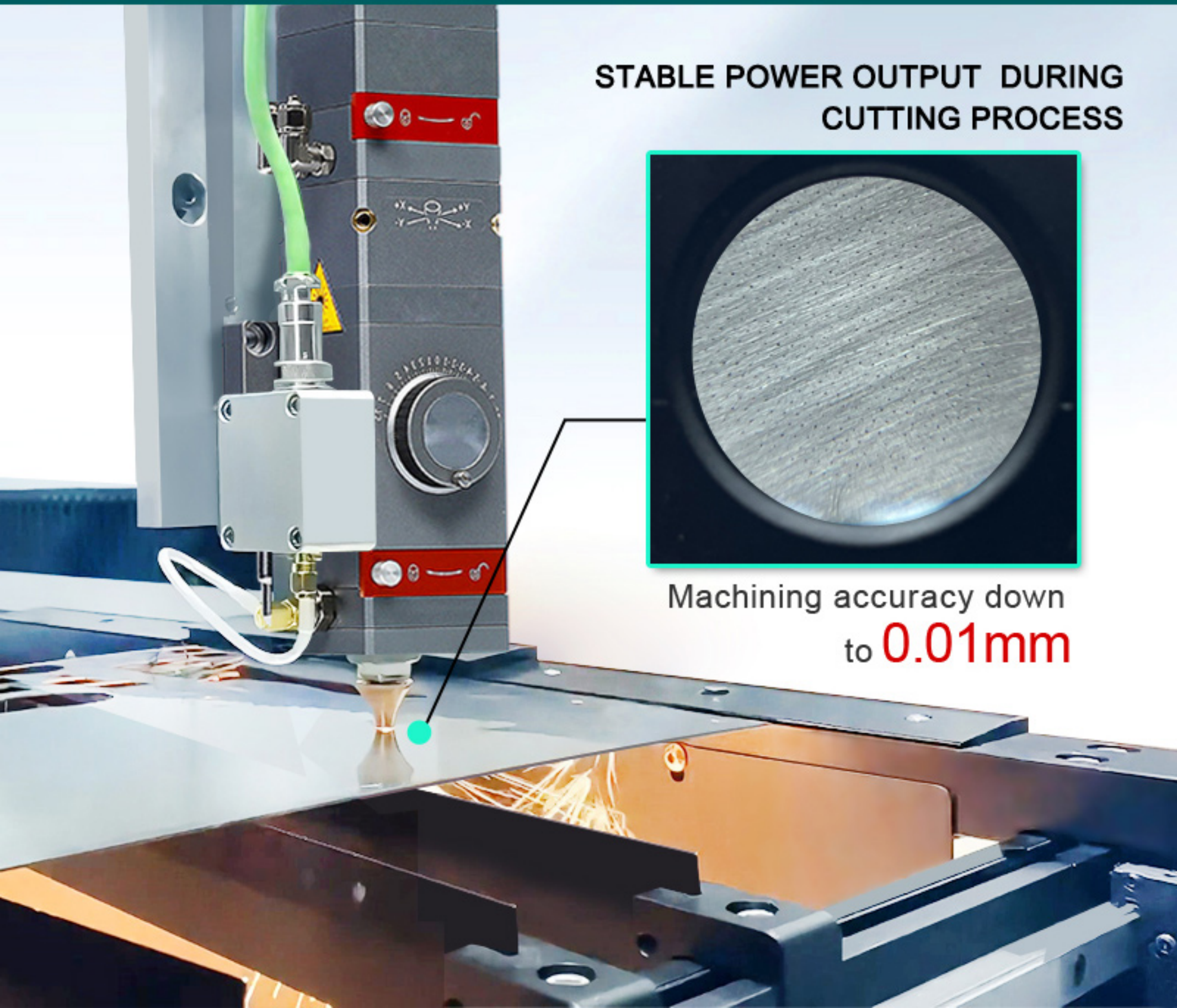
PRODUCT CHARACTERISTICS

Shandong Leize Intelligent Technology Co., Ltd.

STABLE POWER OUTPUT DURING
CUTTING PROCESS



Machining accuracy down
to **0.01mm**



THE SAMPLES SHOW

Metal Material



Metal sheet laser cutting machines can cut a wide range of metals, even though highly reflective metals. For instance, carbon steel, stainless steel, aluminum, copper, brass, titanium, nickel, and various alloys.

Application



The sheet metal laser cutting machine has extensive applications in decoration, infrastructure, construction, microelectronic, advertising, kitchen appliance, automobile and other equipment manufacturing, and other industries.

CUTTING SAMPLE

